

Installation Instruction on GB control box of SPOA10

In order to improve the user experience and reliability of our 2 post lift main switch in India Market, Rotary has designed GB control box for SPOA10.

Parts needed for installing SPOA10 GB control box

For the lifts sold to India Market since Jan 2016, the GB control box has been applied and packed along with entire lift.

For the lifts before Jan 2016, if the customer wants to replace to GB control box, the lift will need extra components including GB control box kit and additional wires. A correct serial number is necessary for checking the height where new switch can be placed and send right length wires.

SPOA10 GB control box kit (Long code: 52.01.02.05.GB control box kit) contains parts as below:

No.	PART NO.	DISCRIPTION	QTY
1	SPOA10-4001	Mounting Bracket	1
2	40403	5/16"-18NC x 1/2" HHCS	3
3	GB-BZ-DQ2	24V Control Box Assembly	1
4	M5*16	PAN HD CRES	4
5		3.3m 2 cores wire	1
6		2.6m 4 cores wire	1



Fig 1: GB control box with additional wires



Fig 2: Mounting Bracket

How to install the GB control box

1. **Preparation:** Fix the GB control box on the column of SPOA10 using the position of tool holder with mounting bracket. Red hole for mounting the bracket to SPOA10 column. Blue hole for mounting the GB control box to the bracket. Shown in Fig 3 as below.

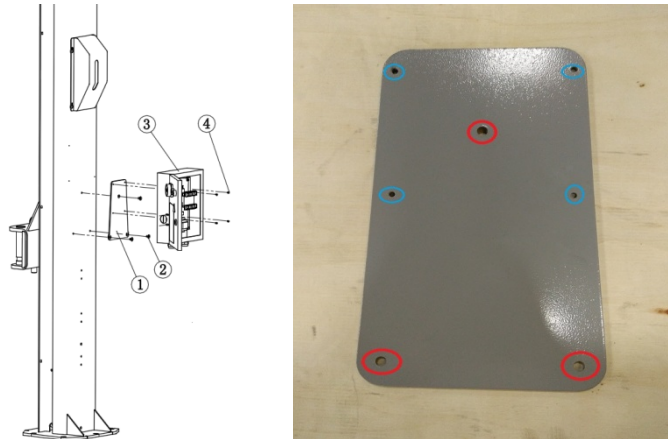


Fig 3: Mounting Bracket

2. **GB control box connection:** Connect the 2 cores wire and 4 cores wire to the GB control box with the method shown as below. The right 2 cores wire (7,9) will extend to the limit switch and the middle 4 cores wire (U1,V1,W1,PE) will approach to the motor. The rest 4 holes (L1,L2,L3,PE) are for power cord which should be prepared by the customer.

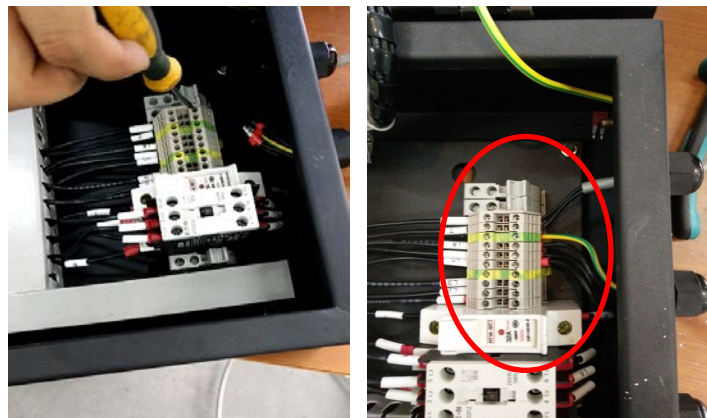


Fig 4: GB control box connection



Fig 5: Power Cord

3. **Motor Connection:** Open the cover of the drum switch on the motor of SPOA10 power unit. Disconnect the wires related. Connect the 4 cores wire which comes out from GB control box with the method shown in Fig 6. (The yellow-green line is the ground line and should be connected to the lead on the right side of the patching panel).

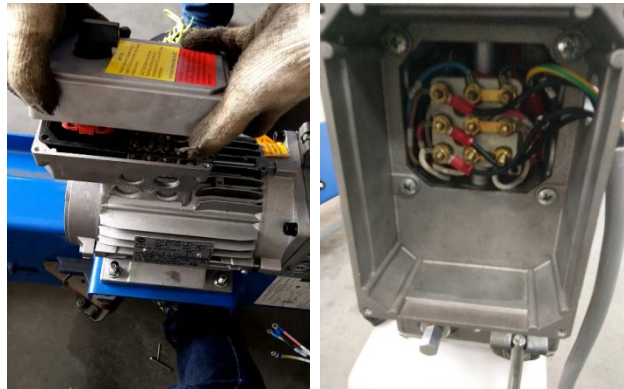


Fig 6: Motor Connection

If the customer still keeps the plastic black control box originally with the motor, they can take down the whole aluminum box and mount it inside the motor. If not, they can still mount the AI box cover back without any additional connection shown in Fig 7.



Fig 7: Cover Box

4. **Proximity Switch connection:** Disconnect the proximity wires and take the contactor out from the black metal box. Connect the 2 cores wire which comes out from the GB control box to the contactor, with the method shown in Fig 8.

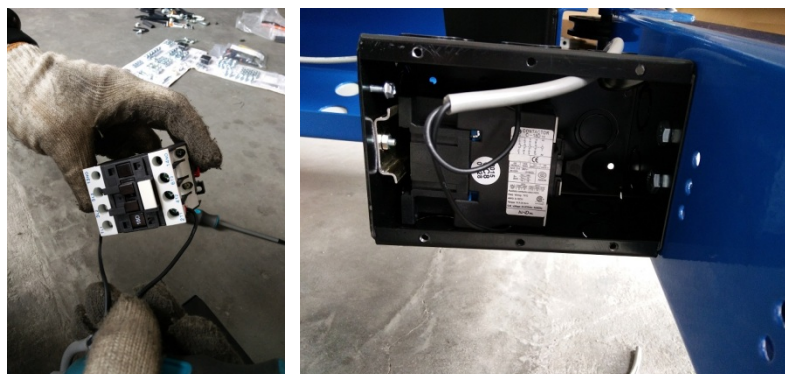


Fig 8: Proximity Switch Connection

5. **Total Connection:** After the total connection, the whole layout will be like below:



Fig 9: Total Connection

If you have any questions, please feel free to contact customer service at 86-513-81261262.

Sincerely,
Louis Huang
Technical Support Engineer
2016/6/6